

Surface Mount Clock Oscillator

Series **CC065L**

- 1.7 mm height
- 3.3 VDC operation
- TTL State Capable



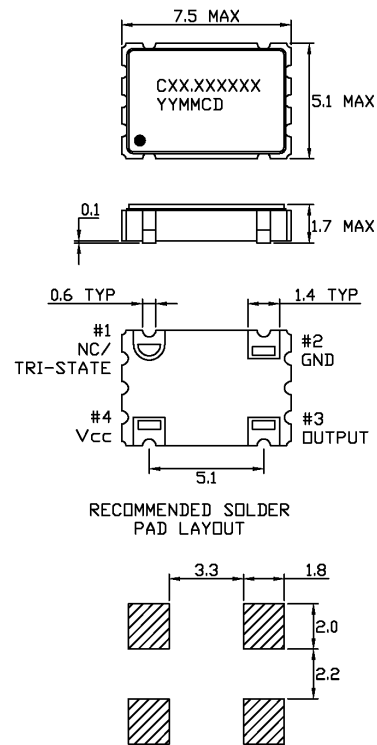
Part Numbering Example: CC065L Z - A2 B2 45 - 33.333 TS

CC065L	Z	A2	B2	45	33.333	TS
SERIES	ADDED FEATURES	OPERATING TEMP.	STABILITY	SYMMETRY	FREQUENCY	TRI STATE
CC065L	BLANK = BULK PACK Z = TAPE AND REEL	Blank = 0°C ~ +70°C A2 = -40°C ~ +85°C	Blank = ±100 ppm B2 = ± 50 ppm BR = ± 25 ppm	Blank = 40/60% 45 = 45/55%		Tri State Standard

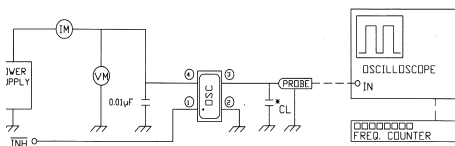
Specifications:

Frequency Range:	1.8432 MHz to 80.000 MHz
Available Stability Options:	±100 ppm <i>Standard</i> ±50 ppm
Output Series:	HCMOS
Input Voltage:	+3.3 VDC ±10%
Operating Temperature Range Options:	-10°C to +70°C -40°C to +85°C
Output Voltage:	V _{OL} = .33 V Max. V _{OH} = 2.97 V Min.
Output Load:	10 LS TTL, 15 pf CMOS
Maximum Input Current:	25 mA (1.8432 to 31.999 MHz) 40 mA (32.000 to 80.000 MHz)
Maximum Rise/Fall Time:	7 ns
Duty Cycle:	40/60% 45/55%
Max. Start-Up Time:	10 ms
Tristate Input:	+0.80 VDC Max. to Disable +2.20 VDC Min. to Enable or open to Enable
Storage Temperature:	-55°C to +125°C
Packaging:	Tape and Reel (1K per Reel)

CC065L

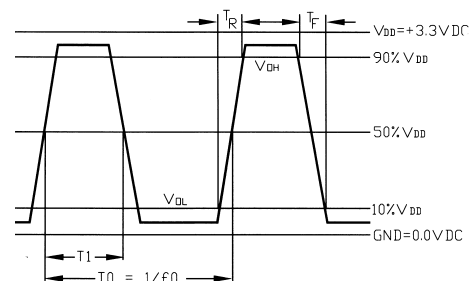


TEST CIRCUIT



* CL=15pF or 50pF : Total Fixture And Probe Capacitance

OUTPUT WAVE FORM



$$\text{METRY} = \left(\frac{T_1}{T_0} \right) \times 100\%$$

